

Figure 6. Autoecological data of *Gerardia macaronesica* growing on the antipatharian *Tanacetipathes cavernicola* at Cape Verde (Tarrafal): **a**, initial phase of the colonization; **b**, antipatharian colony almost covered by *G. macaronesica*.



Figure 7. Autoecological data of *Gerardia macaronesica* growing on *Antipathella wollastoni* at Canaries and Azores: **a**, a colony placed in a vertical wall (Azores); **b**, the same habitat, but noticeable is the way of growing on this antipatharian (Canaries).

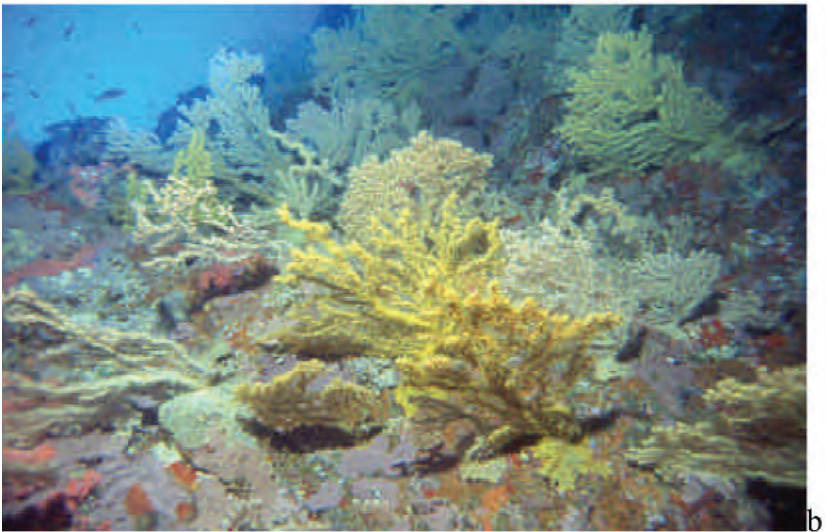
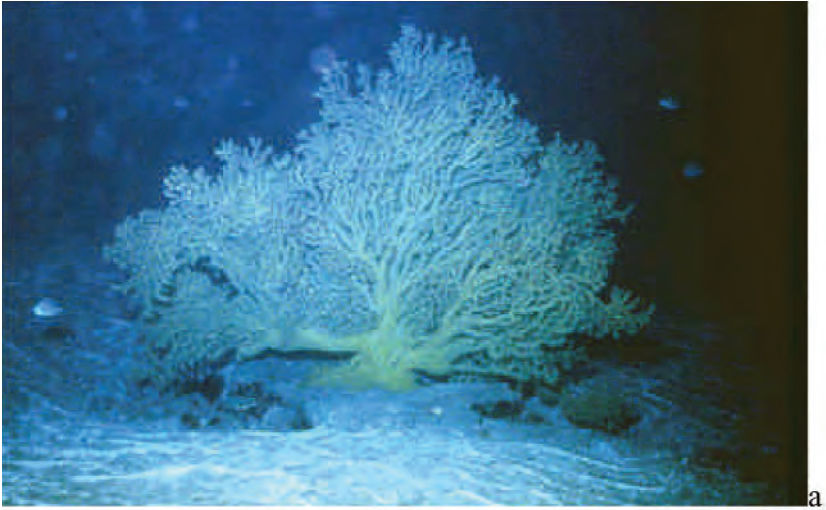


Figure 8. Autoecological data of *Gerardia macaronesica* growing on its own skeleton at Canaries: **a**, a big colony placed in a single plane from a rock platform with sand influence; **b**, a lot of colonies placed on a slope bottom of a seamount near Montaña Clara islet.

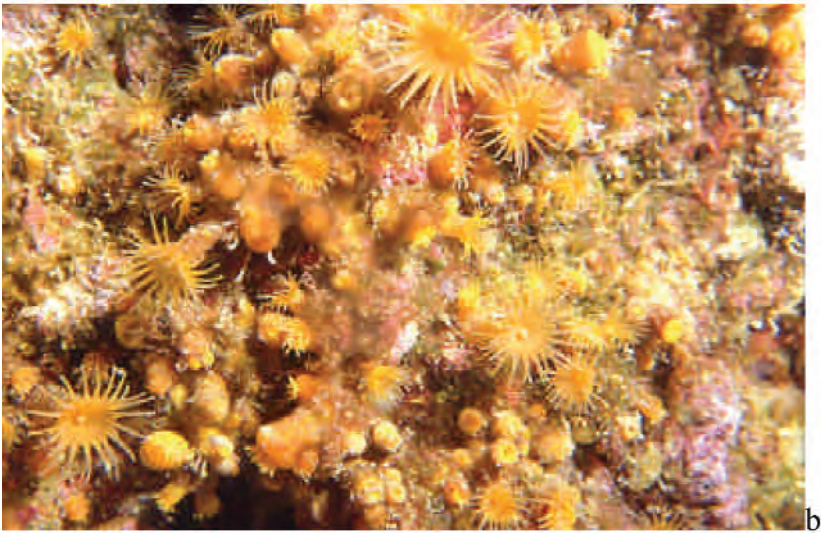
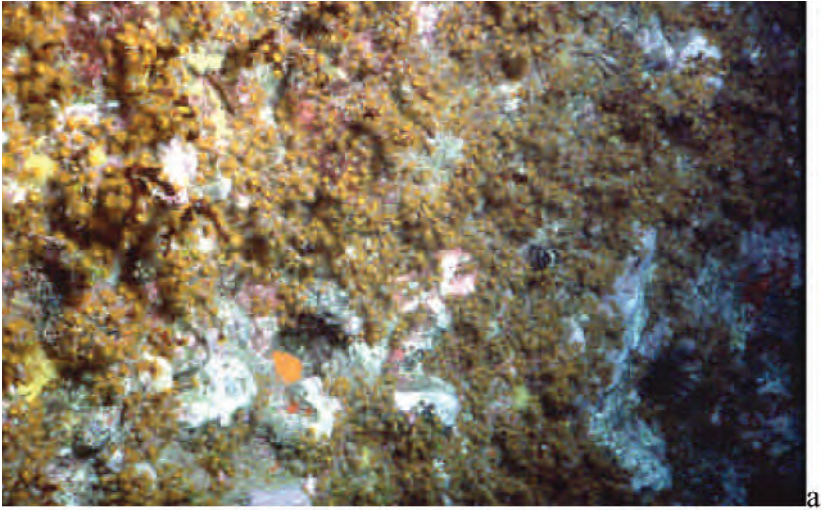


Figure 9. Autoecological data of *Gerardia macaronesica* growing on vertical walls and rocky platform: **a**, the zoanthids can cover a big piece of the substrate; **b**, detail.



Figure 10. Big colony of *Gerardia savaglia* growing on its own skeleton in the circalittoral community (*Paramuricea clavata* "forest") from Ceuta.